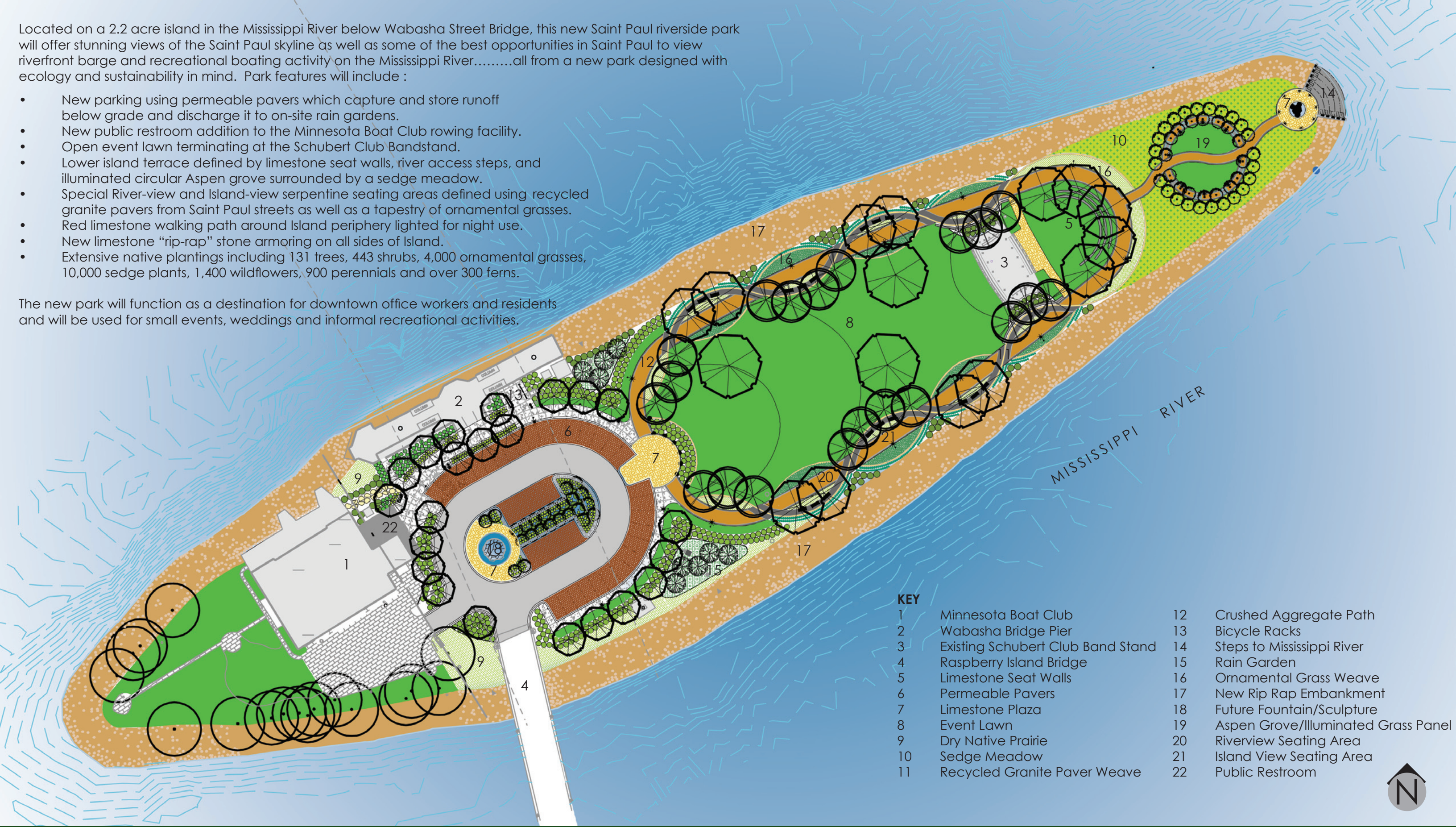


Located on a 2.2 acre island in the Mississippi River below Wabasha Street Bridge, this new Saint Paul riverside park will offer stunning views of the Saint Paul skyline as well as some of the best opportunities in Saint Paul to view riverfront barge and recreational boating activity on the Mississippi River.....all from a new park designed with ecology and sustainability in mind. Park features will include :

- New parking using permeable pavers which capture and store runoff below grade and discharge it to on-site rain gardens.
- New public restroom addition to the Minnesota Boat Club rowing facility.
- Open event lawn terminating at the Schubert Club Bandstand.
- Lower island terrace defined by limestone seat walls, river access steps, and illuminated circular Aspen grove surrounded by a sedge meadow.
- Special River-view and Island-view serpentine seating areas defined using recycled granite pavers from Saint Paul streets as well as a tapestry of ornamental grasses.
- Red limestone walking path around Island periphery lighted for night use.
- New limestone “rip-rap” stone armoring on all sides of Island.
- Extensive native plantings including 131 trees, 443 shrubs, 4,000 ornamental grasses, 10,000 sedge plants, 1,400 wildflowers, 900 perennials and over 300 ferns.

The new park will function as a destination for downtown office workers and residents and will be used for small events, weddings and informal recreational activities.



KEY			
1	Minnesota Boat Club	12	Crushed Aggregate Path
2	Wabasha Bridge Pier	13	Bicycle Racks
3	Existing Schubert Club Band Stand	14	Steps to Mississippi River
4	Raspberry Island Bridge	15	Rain Garden
5	Limestone Seat Walls	16	Ornamental Grass Weave
6	Permeable Pavers	17	New Rip Rap Embankment
7	Limestone Plaza	18	Future Fountain/Sculpture
8	Event Lawn	19	Aspen Grove/Illuminated Grass Panel
9	Dry Native Prairie	20	Riverview Seating Area
10	Sedge Meadow	21	Island View Seating Area
11	Recycled Granite Paver Weave	22	Public Restroom

